

D

406

6,3

407-PA/-PVC

6,3

Technical Data

Nominal Cross-Section:

6,0 mm² max./10 AWG

Rated Voltage: 400 V

to DIN VDE 0110, pollution degree 2

Rated Current: 25 A see DIN 46 249

Material

Moulding 407-PA:

Polyamide, natural, self-extinguishing to UL 94, V-2

The polyamide material used for these connectors passed the Spherical Pressure Test in compliance with VDE 0470 at 125° C/258° F; this test is required for insulation material in several CEE- and VDE-regulations. Comparative Tracking Index: CTI > 600

Temperature Limits (Minimum Values):
 short-time 140°C / 284°F
 continuous 80°C / 176°F
 cold-resistant -40°C / -40°F

Moulding 406, 407-PVC:

Transparent plasticised PVC

Comparative Tracking Index: CTI > 400
 Temperature Limits (Minimum Values):
 short-time approx. 80°C / 176°F
 continuous approx 70°C / 158°F

Tabs:

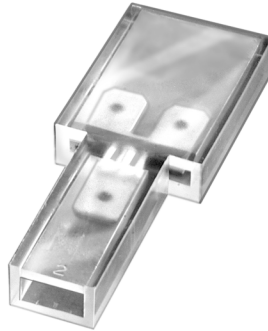
6,3x0,8 (0.25x0.03 in)

Nickel plated brass

for receptacles DIN 46 247

Further details see

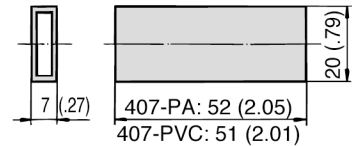
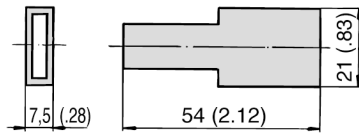
General Description page 32.



This lead distributor is used in motor vehicle construction as in other appliances. Type 406 has a single connector on one side while the other side is equipped with a double connector.

The pushed on receptacles 6,3 (0.25 in) are completely covered and fully insulated.

Types 407 have the same qualities as type 406, but they are equipped with double connectors on both sides.



Order Table

<div style="border: 1px solid black; padding: 5px; display: inline-block;"> 406 </div> <p style="font-size: small; margin-top: 5px;">Type-Designation</p>
--

Order Table

Material: Polyamid	<div style="border: 1px solid black; padding: 5px; display: inline-block;"> 407-PA </div> <p style="font-size: x-small; margin-top: 5px;">Type-Designation</p>
Material: PVC	<div style="border: 1px solid black; padding: 5px; display: inline-block;"> 407-PVC </div> <p style="font-size: x-small; margin-top: 5px;">Type-Designation</p>