

# B

## Phase Monitoring-Modules MPWA

### Technical Data

Operating voltage: 3 AC 400 V  
 Input power: ca. 1 VA  
 Relay: 1 dry contact  
 Switching power: 250 VAC / 1250 VA  
 Ambient temperature: 0° to 60°C

Terminals are at choice, see how to order.

#### Dimensions:

Height above the housing edge:  
 with cover: 51 mm / 2.00 in  
 (total height plus 30 mm)  
 Length: 69 mm / 2.72 in  
 Width: 90 mm / 3.54 in

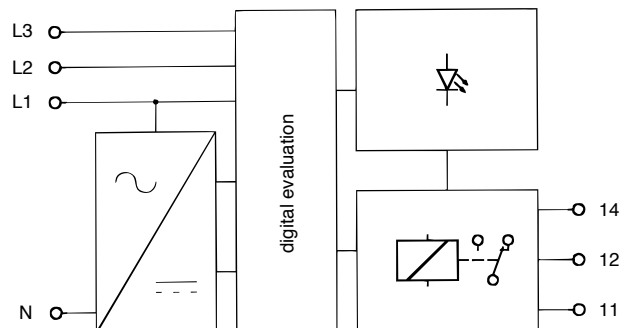
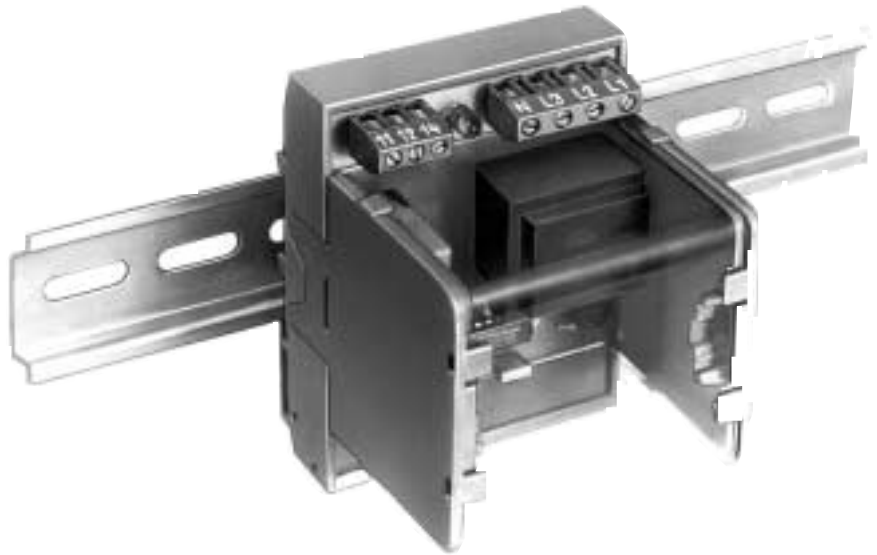
### Description

The module recognises the phase sequence L1-L2-L3 of a three-phase network and prevents an incorrect rotational direction by the motor. In addition, it also monitors the presence of all three phase voltages of the network. This acts as overload protection for the connected consumers.

If all three phases are connected in the right phase sequence, the relay enables the connected equipment and machinery via contacts 11-14. Fault signals are shown on an optical display integrated into the module and the relay drops out.

### Options

⌘ Customer specified designs.



### Order Table

Number of change-over contacts per relay: 1 → <b>A</b>	Terminals Input: Type 977-DS with 2,5 mm <sup>2</sup> → <b>C</b>	Terminals Output: Type 150-A-111 with 2x2,5 mm <sup>2</sup> → <b>M</b> Optional available: (A,B,G,R)
Module -Type: <b>MPWA</b>	Relay Mount: soldered → <b>L</b>	Operating voltage (VAC): <b>400</b>
		Housing: Module Housing M-512 w/o cover → <b>Z</b> with cover → <b>H</b>
<b>M P W A A L - 4 0 0 - C</b>		
Type-Designation		