

B

Rectifier-Modules MGR

Technical Data

Nominal input voltage: At choice
MGR001 and -003: Up to max. 230 VAC

MGRV01, -V03, VL1 and -VL3:
at choice, see how to order.

12 V (rated voltage varistor: 25 V)
24 V (rated voltage varistor: 50 V)
110 V (rated voltage varistor: 150 V)
220 V (rated voltage varistor: 275 V)

Nominal output current:
1 A or 3 A, at choice, see how to order

Maximum series connectable charging capacitor with 24 V AC input voltage:
2200 μ F to 1 A, 6800 μ F to 3 A
to 230 VAC input voltage:
220 μ F to 1 A, 680 μ F to 3 A

Terminals are at choice, see how to order.

Dimensions:

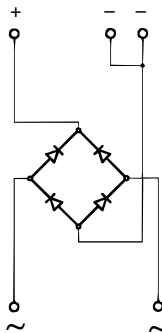
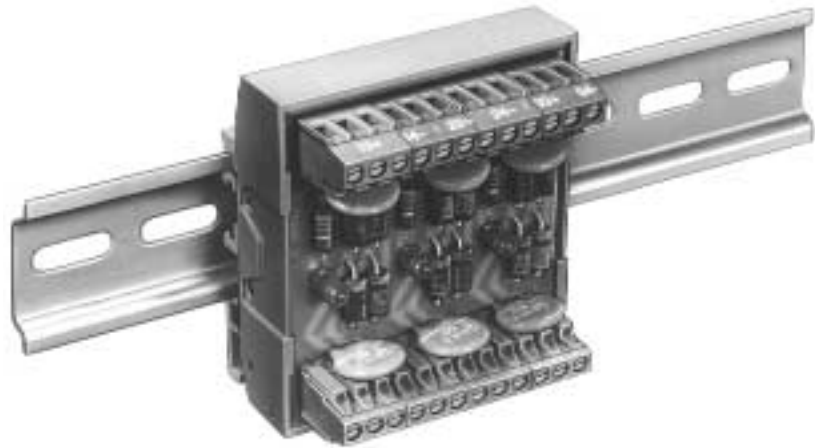
Height above the housing edge: 18 mm / 0.71 in
(total height plus 30 mm)
Length
with 1 rectifier (001, V01, VL1): 24 mm / 0.95 in
with 3 rectifiers (003, V03, VL3): 69 mm / 2.72 in
Width: 76 mm / 3.00 in

Description

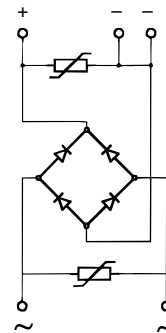
The rectifier modules MGR are available in various versions with one or three rectifiers. In addition to the standard version, they are also available with varistor wiring or with varistor wiring and optical indicator. The rectifier modules provide an unsmoothed DC voltage at the output.

Options

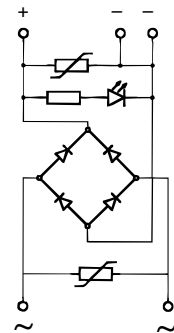
- % Customer specified designs.
- % Types with filter capacitor and/or fuse.



MGR001
1 rectifier
without protective wiring
for max. 230 VAC



MGRV01
1 rectifier with
varistor protective
wiring
for 12, 24, 115 or
230 VAC



MGRVL1
1 rectifier with
varistor protective
wiring and LED
for 12, 24, 115 or
230 VAC

Order Table

Module -Type: MGR	Types and number of rectifiers: 001, 003, V01, V03, VL1, VL3	Rated Current (A): 1, 3	Voltage Input (V): 012, 024, 115, 230 With types 001 and 003 always (up to) 230 (V)	Terminals both sides: Type 150-A-111 2x2,5 mm ² → M Optional available: (A,B,G,R,S)	Housing: Module Housing M-512 Z
M G R - - - - - - Z					
Type-Designation					