



Diode-Modules MDD

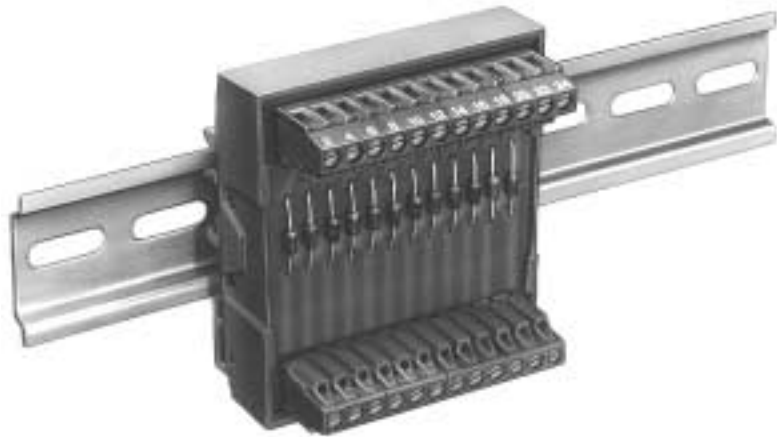
Technical Data

Max. operating voltage: 250 V
 Diode blocking voltage: 1300 V
 Diode current:
 1 or 3 A at choice, see how to order.

Terminals are at choice, see how to order.

Dimensions:

Height above the housing edge:
 With 970-DS (Code B): 11 mm / 0.43 in
 With 900-S (without receptacle, Code S): 13 mm / 0.51 in
 (total height plus 30 mm)
 Length:
 (MDD)E04, A06 and K06: 24 mm / 0.95 in
 (MDD)E08, A14 and K14: 47 mm / 1.85 in
 (MDD)E12, A22 and K22: 69 mm / 2.72 in
 Width: 76 mm / 3.00 in



Description

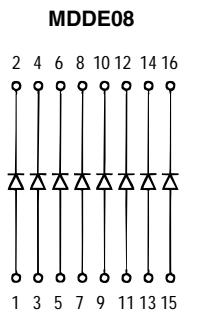
The MDD diode modules are for simple construction of diode circuits in control systems. The standard models are units containing 4, 8 or 12 freely connectable diodes as well as diode gates with 6, 14 or 22 diodes and a common anode or cathode.

The following are the primary tasks performed by these diode circuits:

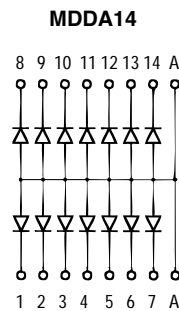
- Reverse polarity protection;
- Gathering and decoupling electrical signals for lamp test circuits, collective fault, messages or similar circuits,
- Arc extinguishing for the switching of inductive leads such as DC relays, magnetic valves, actuator magnets, etc.

Options

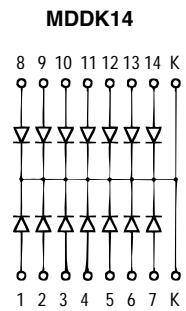
§ Customer specified designs.



MDD E04, – E08 or – E12
 with 4, 8, or 12
 freely connectable
 diodes.



MDD A06, – A14 or – A22
 with 6, 14, or 22
 diodes with
 common anode.



MDD K06, – K14 or – K22
 with 6, 14, or 22
 diodes with
 common cathode.

Order Table

