



# Interface-Modules

## MTE (without)+MTK (with PCB Carrier)

### Technical Data

Rated voltage: 125 VAC  
 Rated current: 1,5 A

Terminals are at choice, see how to order.

**Dimensions:**

Type MTE (without euroboard holder):  
 Height above the housing edge:  
 Example: With terminal 970-E-DS (Code E): 25 mm / 0.98 in  
 (total height plus 30 mm)  
 Length: 114 mm / 4.49 in  
 Width: 76 mm / 3.00 in

Type MTK (with euroboard holder):  
 Height above the housing edge (total height plus 30 mm;  
 to screw mounting version plus ca. 10 mm): 150 mm / 5.91 in  
 Length rail mounting version: 114 mm / 4.49 in  
 Length screw mounting version: 110 mm / 4.33 in  
 Width rail mounting version: 76 mm / 3.00 in  
 Width screw mounting version: 72 mm / 2.83 in

### Description

#### MTE

The interface module MTE with plug connectors, according to DIN 41 612, is normally applied as a distributor of control lines at the interface with electronic circuits.

These serve for conversion from multi-core control cables to single wiring. The modules are provided with type C 64 ( pole ) female or male connectors as standard. Cables, with customary sheath, are securely screwed to both guides.

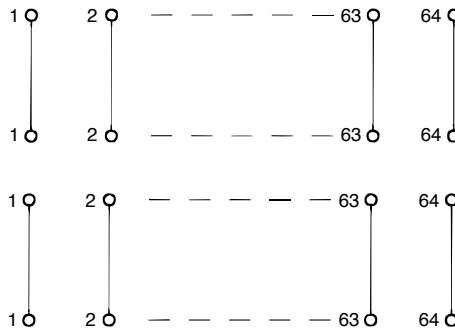
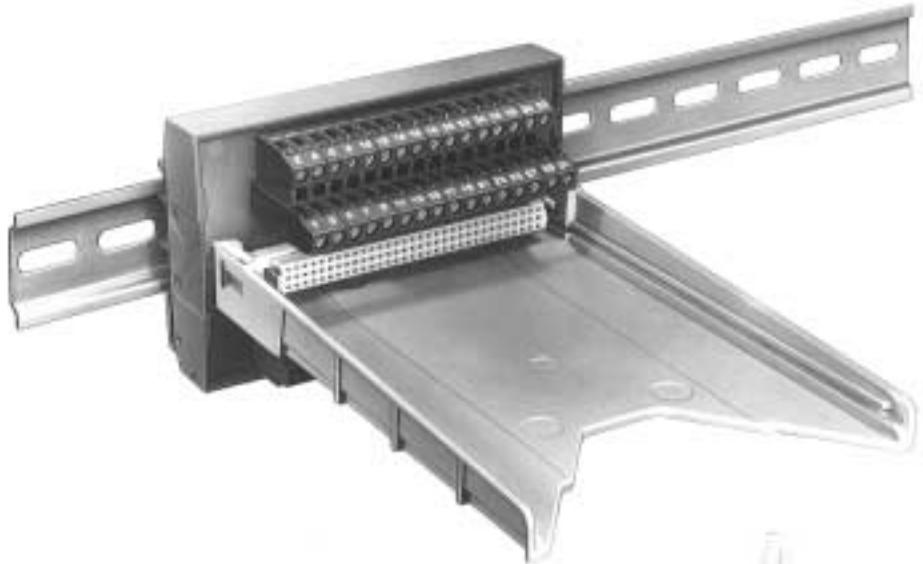
#### MTK

The printed circuit board interface module MTK is designed to accept the 'euroboard' with dimensions of 100 x 160 mm. It is intended for use at the interface between electronic and conventional industrial control circuits.

In addition to rail mounting, a second standard version for conventional screw mounting is available. This version could be mounted at any place in the cabinet to meet special circuit needs. Input wiring is to stacked screw type terminals, or by means of flat-plug strips. The PCB carrier is equipped with either male, or female C64 plugs according to DIN 41 612.

### Options

- ⊗ Customer specified designs.
- ⊗ Female/male connectors of a different type.
- ⊗ Other pole numbers.



Type MTK (with PCB carrier) for Screw mounting, without module housing (see Order Table, Housing).  
 Dimensions of the mounting holes: 100x62,5 mm.

### Order Table

<b>Module-Type:</b> MTE without european PCB carrier  MTK with european PCB carrier	<b>Pole No.:</b> 64 → 064	<b>Version:</b> female → F male → M <small>only for Type MTE available.</small>	<b>Element DIN-Plug-In Screw:</b> C → C1	<b>Terminals Output:</b> Type 150-A-111 with 2x2,5 mm <sup>2</sup> → E Optional available: (K,S)	<b>Housing:</b> Module Housing M-512 → Z Type MTK is also available for screw mounting → 9
<b>0 6 4 - - C 1 -</b>					
Type-Designation					