

B

Relais-Module MRPS

Forced-operated contacts

Technical data

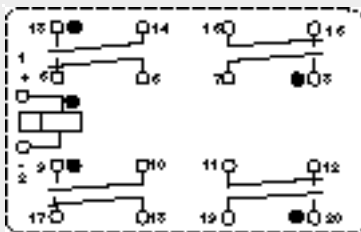
Control circuit:
Coil voltage: 24 VAC/DC
Pick-up/nominal power consumption:
280 mW / 500 mW

Contact circuit:
Contact material: AgSnO
Max. switching voltage: 250 V
Max. switching output: 150 W / 1500 VA
(resistive)
Max. making/breaking current: 20 A / 6 A
Rated current: 6 A
Rated output: 30 W / 50 VA
Mechanical service life: > 1 x 10⁷
Pick-up/drop-out/bounce time: 18/6/4 ms
Permissible ambient temp.: -40° to +70°C

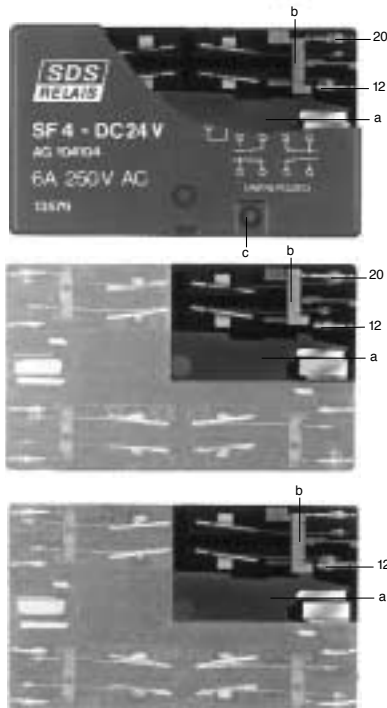
Dimensions:
Height at edge of casing (overall height plus approx. 30 mm): 18 mm/0.71 in.
Length: 69 mm/2.72 in.
Width: 76 mm/3.00 in.

Description

The relay has four pairs of contacts, and one normally-closed and one normally-open contact which are positively driven towards each other via a rotating armature. If the NO contact is closed, the NC contact which performs a monitoring function is opened, and vice-versa.



Relay approvals
TÜV examination No. 945 / EL 178 / 88
SEV approval No. D3.31 / 192
UI approval, File No. E 43 149
SUVA approval, No. 3662 (5A fuse, MT)



- (12) Inner contact
- (20) Outer contact
- (a) Rotary armature
- (b) Actuator
- (c) Nipple

In the event of exposure to full switching capacity, frequent switching or high ambient temperatures, it is advisable to break off nipple (c) to create a ventilation aperture in the cap. Enclosure rating (relay) changes from IP 67 to IP 30!

If an outer contact (20) should weld, the forced operated inner contact (12) driven by the actuator (b) remains open. The rotating armature (a) remains free to move. The unaffected contact pairs can operate normally, (e.g. their function to make or a break remains unaffected).

If an inner contact (12) should weld, the movement of the rotating armature (a) is blocked by the actuator. The open contacts of all four contact pairs remain open. This arrangement corresponds to conventional forced contact operation.

Order Table

Number of change-over contacts per relay: → 4	Kind of Voltage: AC / DC → B AC → A	Number of Relays: 1	Terminal Input: Terminal 150-A-111 with 2x2,5 mm ² → M	Terminal Output: Terminal 150-A-111 with 2x2,5 mm ² → M
Module-Type: MRPS	Relay Mount: soldered → L	Coil Voltage (V): 024 Different voltage upon request	Housing: Modulgehäuse M-512 Z	
M R P S 4 L - 1 - 0 2 4 - M M Z Type-Designation				