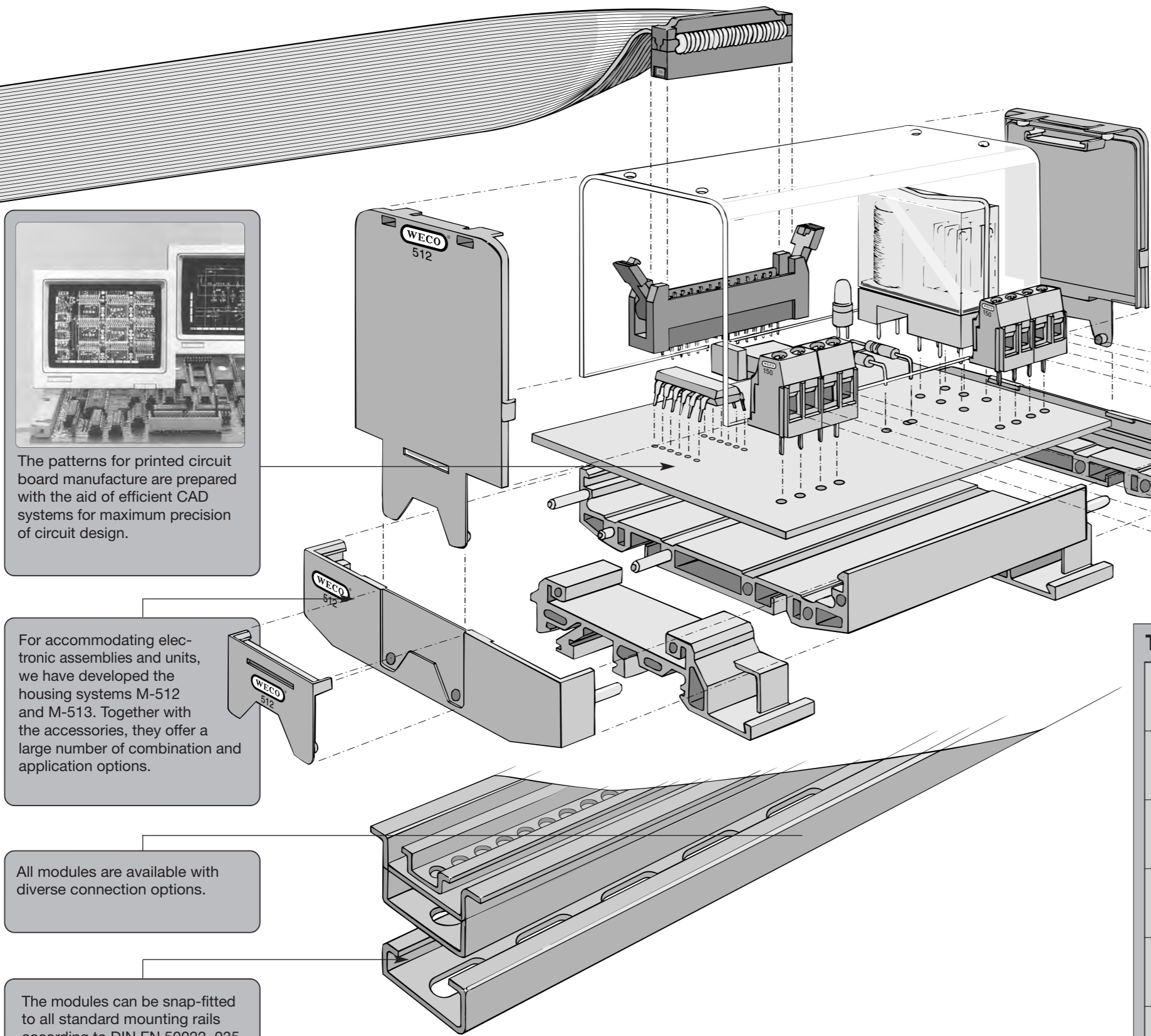


## Our Module Design...



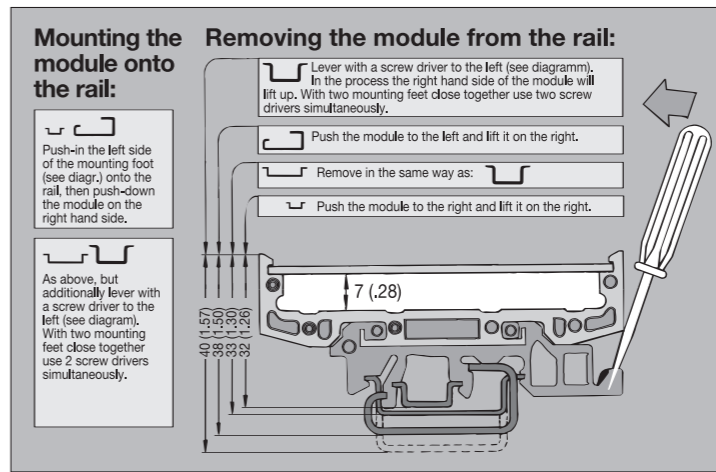
The patterns for printed circuit board manufacture are prepared with the aid of efficient CAD systems for maximum precision of circuit design.

For accommodating electronic assemblies and units, we have developed the housing systems M-512 and M-513. Together with the accessories, they offer a large number of combination and application options.

All modules are available with diverse connection options.

The modules can be snap-fitted to all standard mounting rails according to DIN EN 50022, 035 and -045.

## Ordering-Information



### Description

All modules are sold fully equipped. Included, in addition to the circuit and its components, is the housing, one, two or three foot-assemblies (depending on the assembly length) and connector terminals. The module housing is more fully described on the following pages.

### Terminals

Recommended on the respective product pages is a specific screw terminal as standard (emphasized). This is usually the screw terminal 150-A-111 (2x2,5 mm<sup>2</sup>/ 2x 14 AWG rated cross-section, Code M) with generally coordinated characteristics. Clamping takes place on the lift principle, a 2,3 mm diameter test hole is provided. Preferably recommended for two pole rows is the 150-B-153 (Code P) tier terminal block from the same series. Modules with standard terminal blocks are available at short notice, and a wide variety of other terminal blocks can be provided from our range, see table opposite containing data on the individual types. All alternative terminal options for a module are listed in the order fields in code form.

### Order Table

An order field is provided for each product. The code of the selected alternatives (e.g. the above mentioned terminal blocks) must be entered in the field provided – however only the variants listed in the field – and can be ordered stating the quantity required. For selection options, emphasized alternatives can be supplied at short notice.

Example for a complete Type-Description, refer to page 86:  
The relay module MRPA (MRPA) with one change-over contact - SPDT (A), relays soldered (L), DC negative switching (M), 4 relays (4), 24 V input voltage (024), input terminals 970-DS (Code B), output terminals 900-S (Code S) and module housing M-512 (Code Z) would have the following Type Description:

**MRPAAL - M4 - 024 - BSZ**

Terminal-Type	Code	Terminal-Type	Code		
	<b>990-DS</b> 1,5 mm <sup>2</sup> / 14 AWG Data see page 41.	<b>A</b>		<b>978-E-DS</b> 4 mm <sup>2</sup> / 12 AWG Data see page 37.	<b>K</b>
	<b>970-DS</b> 2,5 mm <sup>2</sup> / 14 AWG Data see page 19.	<b>B</b>		<b>150-A-111</b> 2 x 2,5 mm <sup>2</sup> / 2 x 14 AWG Data see page 47.	<b>M</b>
	<b>977-DS</b> 2,5 mm <sup>2</sup> / 14 AWG Data see page 33.	<b>C</b>		<b>150-C-111</b> 2 x 2,5 mm <sup>2</sup> / 2 x 14 AWG Data see page 48.	<b>N</b>
	<b>974-DS</b> 2,5 mm <sup>2</sup> / 14 AWG Data see page 30.	<b>D</b>		<b>150-B-153</b> 2 x 2,5 mm <sup>2</sup> / 2 x 14 AWG Data see page 49.	<b>P</b>
	<b>970-E-DS</b> 2,5 mm <sup>2</sup> / 14 AWG Data see page 37.	<b>E</b>		<b>120-M-221</b> incl. 120-A-111 1,5 mm <sup>2</sup> / 14 AWG Data see page 73.	<b>R</b>
	<b>978-DS</b> 4 mm <sup>2</sup> / 10 AWG Data see page 35.	<b>G</b>		<b>900-S</b> Flat Plug Terminal 2,8 mm / 6,3 mm Data see page 100.	<b>S</b>